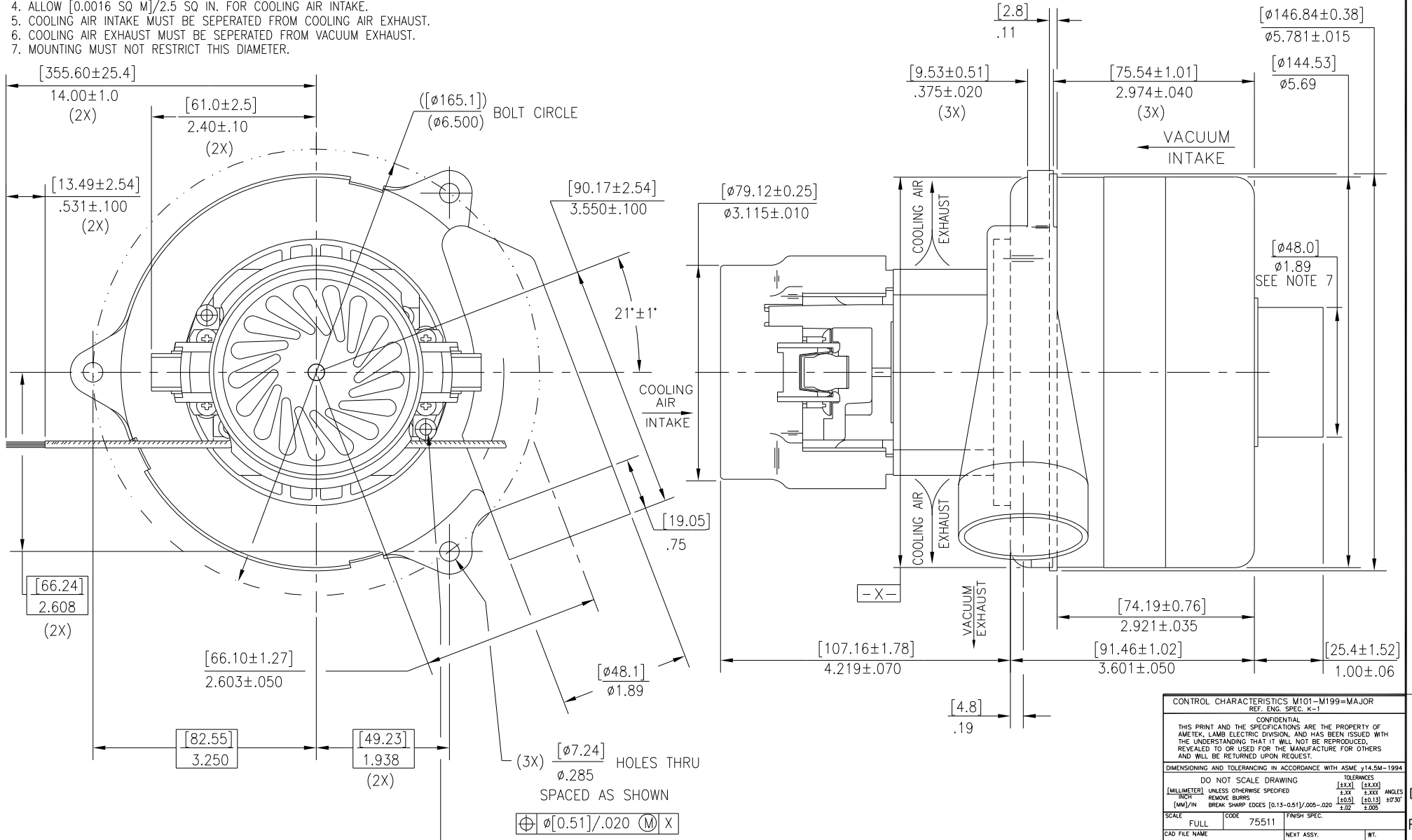


NOTES:

- LEADS: 14 GA STRANDED, LEADS CAN BE ANY COLOR EXCEPT GREEN OR GREEN WITH YELLOW STRIPE.
- GROUNDING OR EARTHING PROVISIONS: USE HOLES AS INDICATED FOR GROUNDING OR EARTHING. REFER TO APPROPRIATE LISTING OR REGULATORY AGENCY FOR PROPER METHOD OF GROUNDING OR EARTHING.
- MOTOR IDENTIFICATION: MANUFACTURER'S NAME, MODEL NUMBER, VOLTAGE, FREQUENCY, INSPECTORS CODE, DATE OF MANUFACTURE, AGENCY RECOGNITION CODE, PLANT LOCATION CODE, PATENT INFORMATION " ONE OR MORE OF THE FOLLOWING PATENTS APPLY TO THIS MOTOR: 5482378; 5736805; 4669952; 4684835." AND MADE IN THE USA.
- ALLOW [0.0016 SQ M]/2.5 SQ IN. FOR COOLING AIR INTAKE.
- COOLING AIR INTAKE MUST BE SEPERATED FROM COOLING AIR EXHAUST.
- COOLING AIR EXHAUST MUST BE SEPERATED FROM VACUUM EXHAUST.
- MOUNTING MUST NOT RESTRICT THIS DIAMETER.

REVISIONS			
REV.	ECN NO.	DESCRIPTION	DATE
A	16674	REDRAWN ON CAD: REM HOUSING CLIPS	2-7-87
B	21238	UPDATED DRAWING & HOUSING STYLE -MF	10-7-92
C	28524	2.40±.10 WAS 2.370±.050, UPDATE PRINT TO CURRENT STANDARDS.	4-15-00



10-32(TYPE 23) THREAD CUTTING
SCREW RECOMMENDED
(SEE NOTE 2)(2 PLACES)

CONTROL CHARACTERISTICS M101-M199=MAJOR
REF. ENG. SPEC. K-1

CONFIDENTIAL
THIS PRINT AND THE SPECIFICATIONS ARE THE PROPERTY OF AMETEK, LAMB ELECTRIC DIVISION, AND HAS BEEN ISSUED WITH THE UNDERSTANDING THAT IT WILL NOT BE REPRODUCED, REVEALED TO OR USED FOR THE MANUFACTURE FOR OTHERS AND WILL BE RETURNED UPON REQUEST.

DIMENSIONING AND TOLERANCING IN ACCORDANCE WITH ASME Y14.5M-1994

DO NOT SCALE DRAWING

	(MILLIMETER)	(INCH)	(MILLIMETER)	(INCH)	ANGLES
TOLERANCES	[±0.13]	[±0.005]	[±0.13]	[±0.005]	[±0.13]
FINISH	1.3X	1.3X	1.3X	1.3X	10/30
REMOVE BURRS	[±0.5]	[±0.5]	[±0.13]	[±0.13]	10/30
BREAK SHARP EDGES [0.13-0.51]/005-020	±0.2	±0.008	±0.2	±0.008	

SCALE FULL CODE 75511 FINISH SPEC.

CAD FILE NAME NEXT ASSY. WT.

DRWN BY: B. CICCARELLI DATE: 2-7-87 ENG. APP'D: R. SUMSER DATE: 2-7-87

TITLE OUTLINE, 36V, 1.5 STK. C

E-NO. REF. 116515-29-0 SHEET 1 OF 1

AMETEK LAMB ELECTRIC DIVISION KENT, OHIO 44240 DWG. NO. 116513-32-0

D1
R3
K3
CZ

